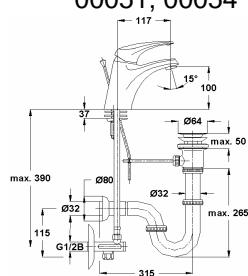


Armature PRESTIGE Basin mixer

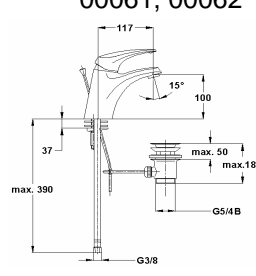
Data sheet for
00051
Valid 10.2007



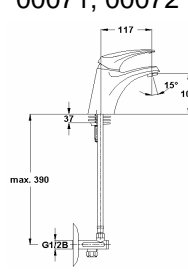
00051, 00054



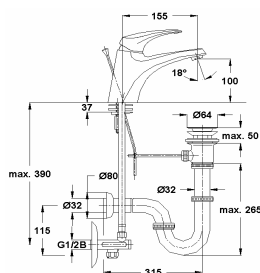
00061, 00062



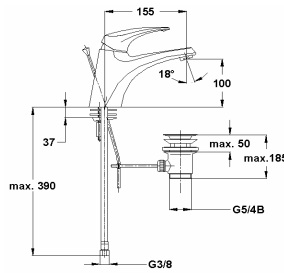
00071, 00072



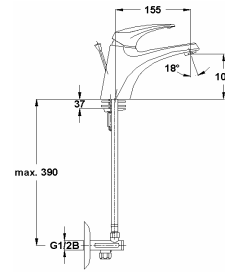
00055, 00056



00063, 00064



00073, 00074



Model:	Colour:	Model:	Colour:
00051	Chrome	00055	Krom
00054	Sateen	00056	Saten
00061	Chrome	00063	Krom
00062	Sateen	00064	Saten
00071	Chrome	00073	Krom
00072	Sateen	00074	Saten

Body: brass acc. EN 12164, chrom plated
Cartridge: ϕ 40 mm, Eco-temp cartridge, with warm wather flow reduction option
Handle: brass, chrom plated
Sealing elements: rubber EPDM

Construction

Flexible connecting hose for domestic tap fittings G3/8x450

Conections

Working pressure: up to 3 - 5 bar

Recommendable pressure

Working pressure: up to 8 bar

Maximum pressure

Working pressure: up to 0,5 bar

Minimum pressure

Working temperature: 5 - 65°C

Recommendable temp.

Working temperature: 80°C

Maximum temperature

Sanitary armaturen is used in the high pressure sanitary systems.
Eco-temp cartridge, with warm wather flowreduction option, economic volume wather flowcontrol valve with 2 different levels.

Application

You have to wash out all pipes before assembling.
Connect sanitary mixer and primary water pipe with flexible hose. Remove aerator and rotate mixer handle in tottaly open position. Slowly open pipe valves and manipulate with mixer handle in all possittions. Repairing the armature is allowed only performed trade person. Affter assembling we advice to wash out mixer for an our.
We recommended to reduce water pressure over 5 bar with suitable pressure reducer.

Instruction for assembling and maintenance

We reserve the right to make modifications
in line with progress in engineering.



Kovinsko predelovalno podjetje d.d.
Grmaška c.3, 1275 Šmartno pri Litiji, SLOVENIJA